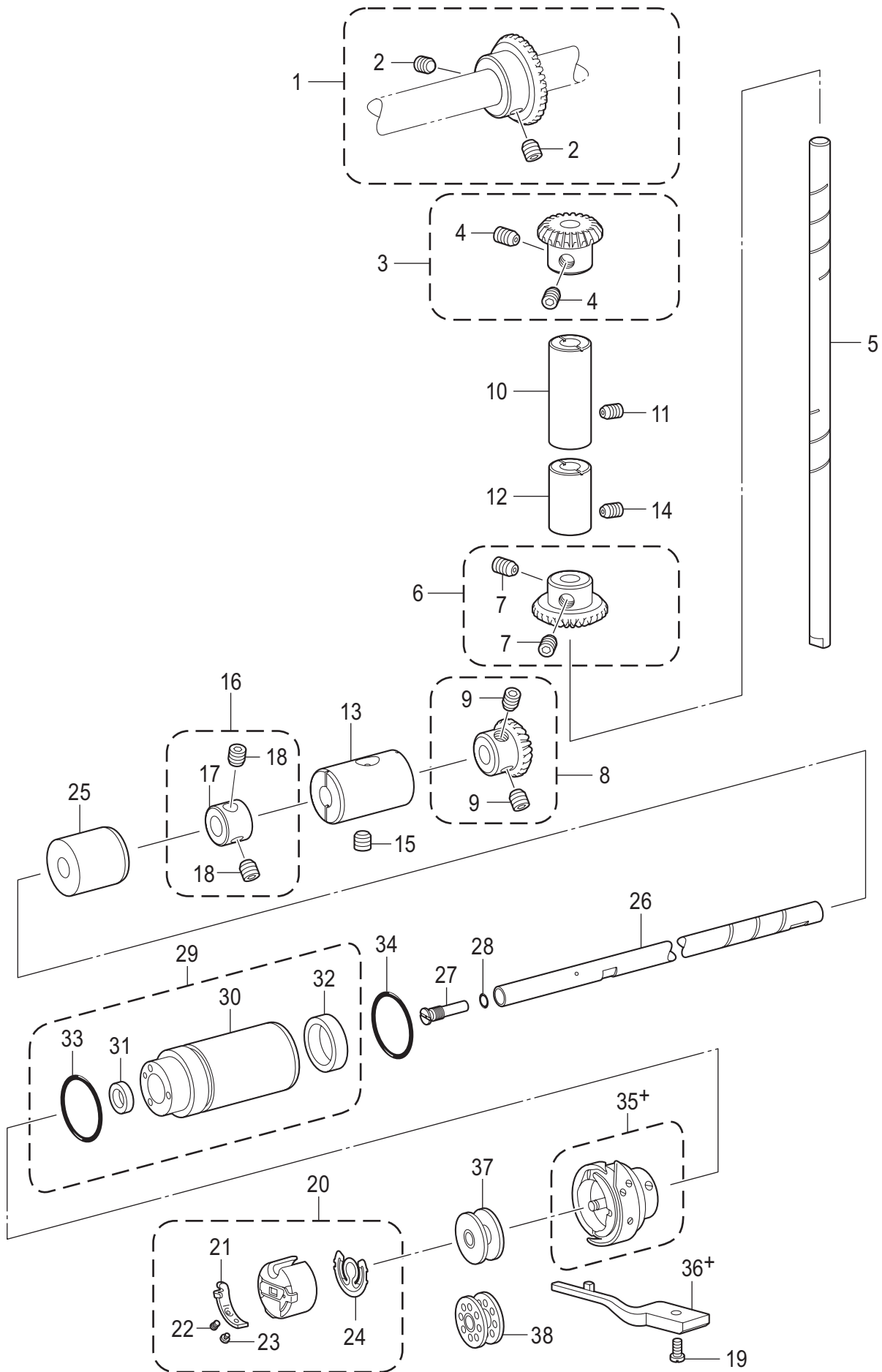


F. 旋梭装置 / Rotary hook mechanism



F. 旋梭装置 / Rotary hook mechanism

参照号	零部件序号	数量	零部件名称	NAME OF PARTS	RM
1	SB2032001	1	上轴斜齿轮组件	UPPER SHAFT BEVEL GEAR ASSY	
2	014770632	2	螺钉 SM6.35-40X6	SET SCREW SOCKET SM6.35-40X6	
3	SB2034001	1	竖轴伞齿轮组件 U	VERTICAL BEVEL GEAR ASSY U	
4	014770632	2	螺钉 SM6.35-40X6	SET SCREW SOCKET SM6.35-40X6	
5	SB7285001	1	竖轴	VERTICAL SHAFT	
6	SB2036001	1	竖轴伞齿轮组件 D	VERTICAL BEVEL GEAR ASSY D	
7	014770632	2	螺钉 SM6.35-40X6	SET SCREW SOCKET SM6.35-40X6	
8	SB2038001	1	下轴斜齿轮组件	LOWER SHAFT BEVEL GEAR ASSY	
9	014770632	2	螺钉 SM6.35-40X6	SET SCREW SOCKET SM6.35-40X6	
10	142708120	1	竖轴上轴套	VERTICAL SHAFT BUSH U	
11	012060636	1	螺钉 M6X6	SET SCREW SOCKET (FT) M6X6	
12	SB3856001	1	竖轴下轴套	VERTICAL SHAFT BUSH D	
13	SB7318001	1	下轴右轴套	LOWER SHAFT BUSH R	
14	012060636	1	螺钉 M6X6	SET SCREW SOCKET (FT) M6X6	
15	012060636	1	螺钉 M6X6	SET SCREW SOCKET (FT) M6X6	
16	SB3796001	1	紧圈组件	SET SCREW COLLAR ASSY	
17	SB3797001	1	紧圈	SET SCREW COLLAR	
18	014770632	2	螺钉 SM6.35-40X6	SET SCREW SOCKET SM6.35-40X6	
19	SA8903001	1	螺钉 M4X12	SCREW M4X12	
20	S06573101	1	梭心套组件	BOBBIN CASE ASSEMBLY	
21	183388001	1	旋芯套调整簧片	TENSION SPRING	
22	183389001	1	旋芯套调整螺钉	ADJUSTING SCREW	
23	183390001	1	固定螺钉	SET SCREW	
24	S06594001	1	空转防止弹簧	SPRING, ANTI-SPIN	
25	SB7319001	1	下轴套组件 M	LOWER SHAFT BUSH M	
26	SB7322101	1	旋梭轴	ROTARY HOOK SHAFT	
27	SB7592001	1	油盖螺钉组件	SCREW CAP W/HOLE ASSY	
28	081004870	1	O形圈 S4	O RING S4	
29	SB7682001	1	泵轴套组件	PUMP BUSH ASSY	
30	SB7683001	1	泵轴套	PUMP BUSH	
31	SA7320001	1	油封	OIL SEAL	
32	SA9684001	1	油封	OIL SEAL	
33	081024870	1	O形圈 S24	O RING S24	
34	081028870	1	O形圈 S28	O RING S28	
35+	SB6568001	1	<用于-□03> 盒装旋梭组件 SB5274	<For -□03> ROTARY HOOK ASSY W/BOX SB5274	
36+	SB5041001	1	旋梭定位钩3	HOOK STOPPER 3	
37	146290021	1	梭芯	BOBBIN	
35+	SB1677001	1	<用于-□05> 盒装旋梭组件 SB1678	<For -□05> ROTARY HOOK ASSY W/BOX SB1678	
36+	SB5042001	1	旋梭定位钩5	HOOK STOPPER 5	
38	117132001	1	梭芯	BOBBIN	