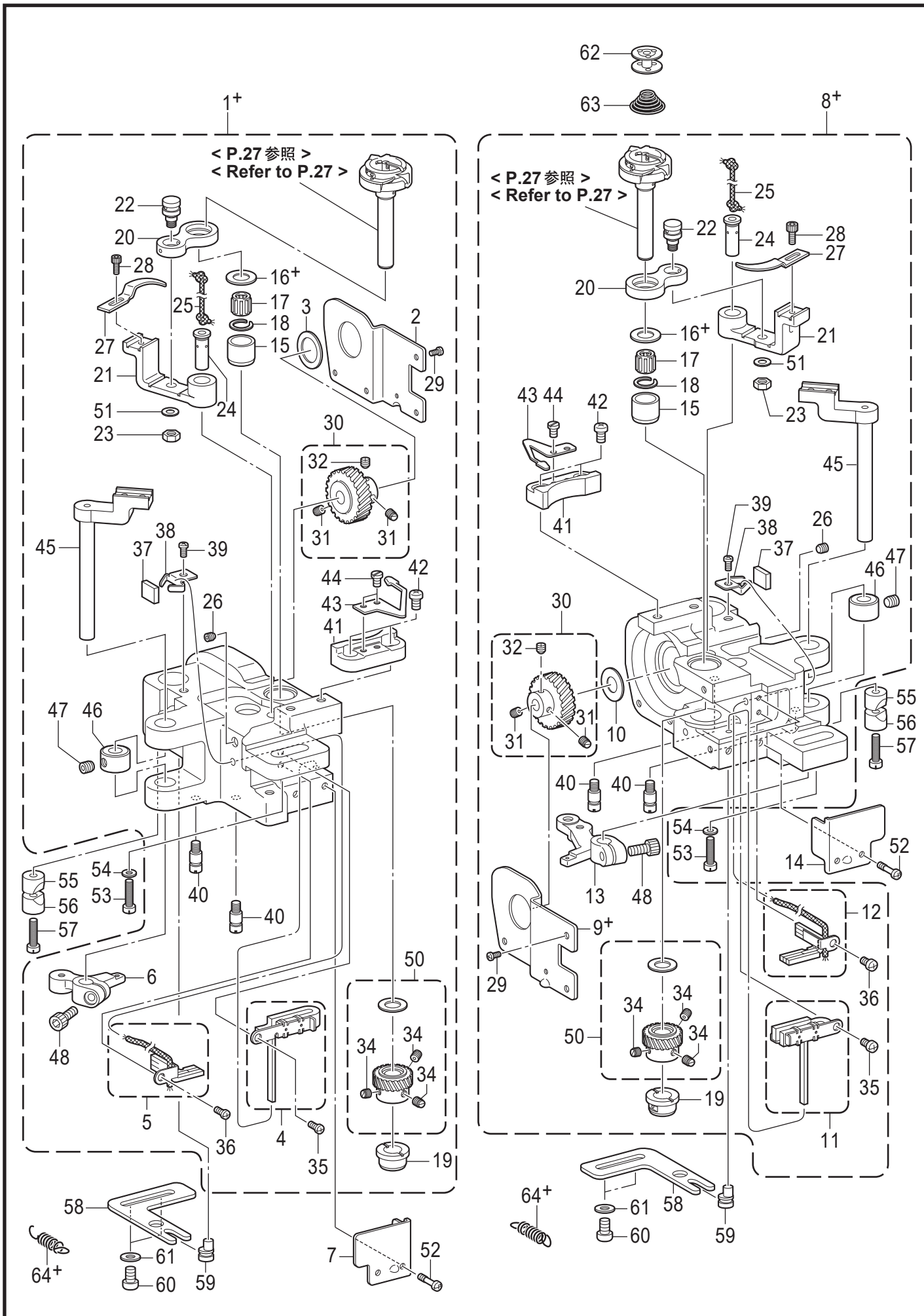


T-8452D

K1. 旋梭装置 / Rotary hook mechanism

参照号	零部件序号	数量	零部件名称	NAME OF PARTS	RM
51	SB2330001	2	平垫圈 S4.76	WASHER PLAIN S SM4.76	
52	SA6417001	4	螺钉 M4X12	SCREW M4X12	
53	SA2556001	2	螺钉 M6X25	SCREW, M6X25	
54	115947101	2	垫圈 6.35	WASHER PLAIN 6.35	
55	SA2722001	2	套管 A	PINCH SLEEVE A	
56	SA2565001	2	套管 B	PINCH SLEEVE B	
57	SA2556001	2	螺钉 M6X25	SCREW, M6X25	
58	SA2567001	2	调节板	NEEDLE UPPER ADJUSTING PLATE	
59	SA2568001	2	调节轴	NEEDLE UPPER POSITIONING SHAFT	
60	062061016	4	螺钉 M6X10	SCREW PAN M6X10	
61	025060136	4	平垫圈 S6	WASHER PLAIN S 6	
62	S01928151	2	梭芯	BOBBIN	
63	148602001	2	防空转弹簧	ANTI-SPIN SPRING	
			<用于-403>	<For -403>	
64+	SA4458001	2	弹簧 B	SPRING, EXTENSION B	
			<用于-405>	<For -405>	
64+	SA2826001	2	弹簧	SPRING, EXTENSION	



J2. かま関係 (T-8422D-40[]) / Rotary hook mechanism (T-8422D-40[]) **T-8421D / T-8422D**

REF.NO	CODE	Q'TY	品名	NAME OF PARTS	RM
51	SB2330001	2	ヒラザガネシヨウ4.76	WASHER PLAIN S SM4.76	
52	SA6417001	4	シメネジM4X12	SCREW M4X12	
53	SA2556001	2	シメネジM6X25	SCREW, M6X25	
54	115947101	2	ザガネ	WASHER PLAIN 6.35	
55	SA2722001	2	ピンチスリーブA	PINCH SLEEVE A	
56	SA2565001	2	ピンチスリーブB	PINCH SLEEVE B	
57	SA2556001	2	シメネジM6X25	SCREW, M6X25	
58	SA2567001	2	ハリスキチヨウセツイタ	NEEDLE UPPER ADJUSTING PLATE	
59	SA2568001	2	ハリスキチヨウセツジク	NEEDLE UPPER POSITIONING SHAFT	
60	062061016	4	ナベコ6X10	SCREW PAN M6X10	
61	025060136	4	ヒラザガネシヨウ6	WASHER PLAIN S 6	
62	S01928151	2	ボビン	BOBBIN	
63	148602001	2	クウテンボウシバネ	ANTI-SPIN SPRING	
64+	SA4458001	2	<-□03用> イトキリレバーバネB	<For -□03> SPRING EXTENSION B	
64+	SA2826001	2	<-□05,-S07用> イトキリレバーバネ	<For -□05,-S07> SPRING, EXTENSION	