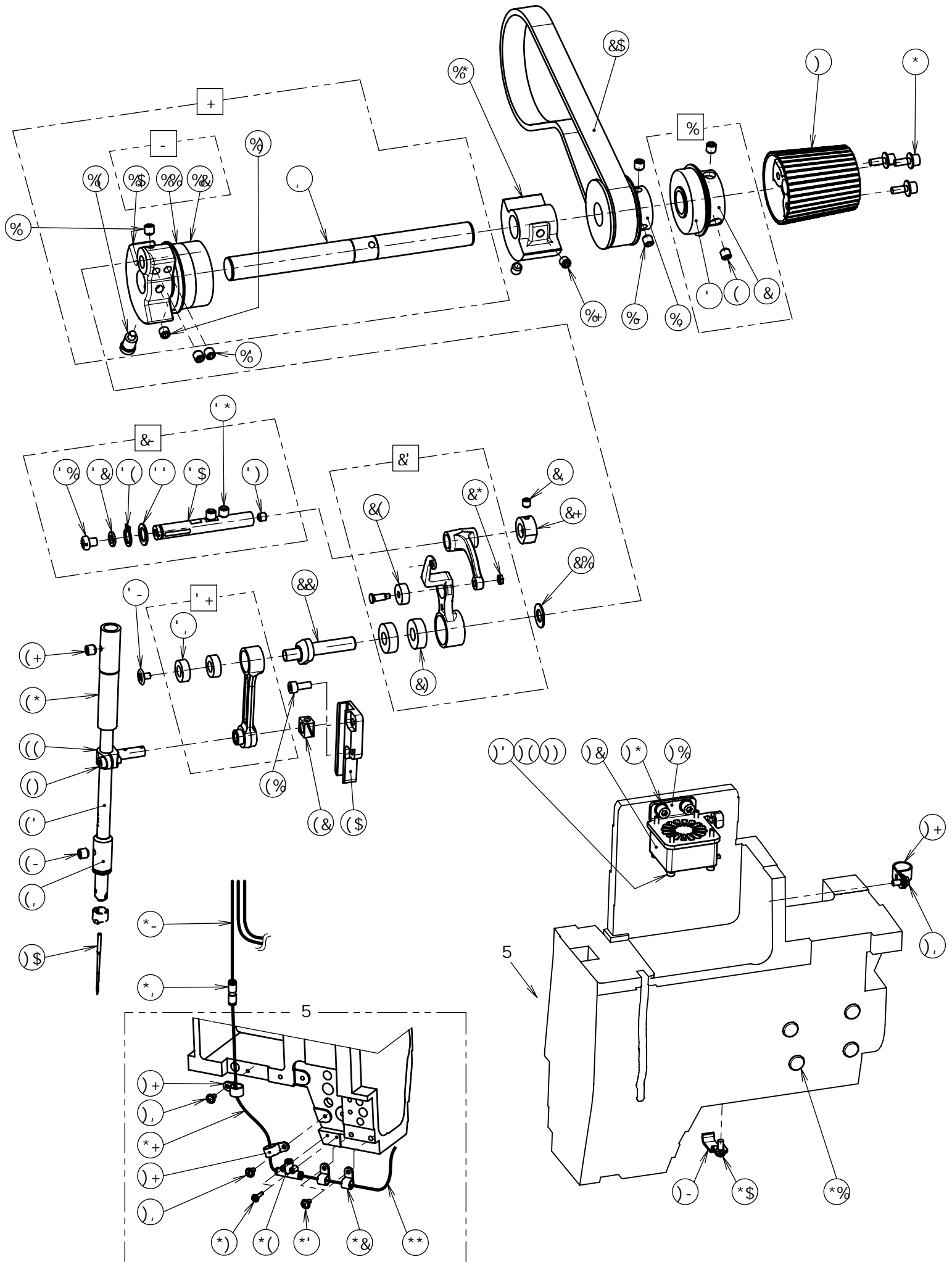


C1. 上軸・針棒関係 / UPPER SHAFT AND NEEDLE BAR MECHANISM

ÓÜËË €Ð
HÍ PËGH

Ref. No.	Code	Q'ty	品名	Part Name
1	SB8070001	1	ベアリングブッシュクミ	BALL BEARING BUSH ASSY
2	SB8049001	1	ベアリングブッシュ	BALL BEARING BUSH
3	SB1484001	1	ベアリング6004	BALL BEARING 6004
4	S23651001	2	アナヒラ6X6ホソメ	SET SCREW SOCKET (FT) M6X6
5	SB8071101	1	ハンドプーリ	HAND PULLEY
6	S55481001	3	アナボルトザクミ4X12	BOLT SOCKET (S/P WASHER)M4X12
7	SB8044001	1	ウワジククミ	UPPER SHAFT ASSY
8	SB8045001	1	ウワジク	UPPER SHAFT
9	SB8047001	1	ツリアイクランクGクミ	THREAD TAKE-UP CRANK G ASSY
10	SB8046001	1	ツリアイクランクG	THREAD TAKE-UP CRANK G
11	SB1484001	1	ベアリング6004	BALL BEARING 6004
12	SB1485001	1	ベアリング6004	BALL BEARING 6004
13	S23651001	3	アナヒラ6X6ホソメ	SET SCREW SOCKET (FT) M6X6
14	S25235001	1	シメネジ8	SCREW M8
15	S23651001	1	アナヒラ6X6ホソメ	SET SCREW SOCKET (FT) M6X6
16	SB8048001	1	バランサー	BALANCER
17	S23651001	2	アナヒラ6X6ホソメ	SET SCREW SOCKET (FT) M6X6
18	SB8037001	1	プーリ001クミ	PULLEY 001 ASSY
19	S23651001	2	アナヒラ6X6ホソメ	SET SCREW SOCKET (FT) M6X6
20	SB8011001	1	ベルト505	BELT 505
21	110367001	1	ザガネ	WASHER, PLAIN SPECIAL 8
22	SB8111001	1	ハリボウクランク	NEEDLE BAR CRANK
23	SB8109001	1	テンビンクミ	THREAD TAKE-UP LEVER ASSY
24	SB3949001	1	ベアリング624	BALL BEARING 624T
25	SB3950001	2	ベアリング698	BALL BEARING 698
26	021300306	1	3シュナット3	NUT 3 M3
27	SB6735001	1	セットカラー	SET SCREW COLLAR
28	012500536	2	アナヒラ5X5	SET SCREW SOCKET (FT) M5X5
29	SB6729101	1	テンビンササエジクDクミ	THREAD TAKE-UP S-SHAFT D ASSY
30	SB6730001	1	テンビンササエジクD	THREAD TAKE-UP SUPPORT SHAFT D
31	062500616	1	ナベコ5X6	SCREW PAN M5X6
32	028050246	1	バネザガネ2-5	WASHER SPRING 2-5
33	SB6734001	1	スラストザガネ9	THRUST WASHER 9
34	048090142	1	トメワジクヨウC9	RETAINING RING EXTERNAL C9
35	012500536	1	アナヒラ5X5	SET SCREW SOCKET (FT) M5X5
36	012060636	2	アナヒラ6X6	SET SCREW SOCKET (FT) M6X6
37	SB1034101	1	ハリボウレンカンクミ	NEEDLE BAR CONNECTING ROD ASSY
38	SB0989001	2	ベアリング687	BALL BEARING 687
39	SA2422001	1	シメネジ3.57L	SCREW, SM3.57L
40	SB8112001	1	カクコマアンナイ	SLIDE BLOCK GUIDE
41	018401036	2	アナボルト4X10	BOLT SOCKET M4X10
42	SA3488001	1	カクコマ	SLIDE BLOCK
43	SB8114001	1	ハリボウD	NEEDLE BAR D
44	SB8113001	1	ハリボウダキDクミ	NEEDLE BAR CLAMP D ASSY
45	018401036	1	アナボルト4X10	BOLT SOCKET M4X10
46	SA3223001	1	ハリボウメタルU	NEEDLE BAR BUSH U
47	012060636	1	アナヒラ6X6	SET SCREW SOCKET (FT) M6X6
48	SA3224101	1	ハリボウメタルD	NEEDLE BAR BUSH D
49	012060636	1	アナヒラ6X6	SET SCREW SOCKET (FT) M6X6
50		1	ミシンハリDPX17	NEEDLE, DPX17
51	SB8206001	1	DCファントリツケイタ	DC FAN SETTING PLATE
52	SB8205101	1	DCファン	DC FAN
53	SB3847001	4	ヒラザガネチュウ3	WASHER_PLAIN_M_3
54	028030246	4	バネザガネ2-3	WASHER SPRING 2-3
55	018303036	4	アナボルト3X30	BOLT SOCKET M3X30

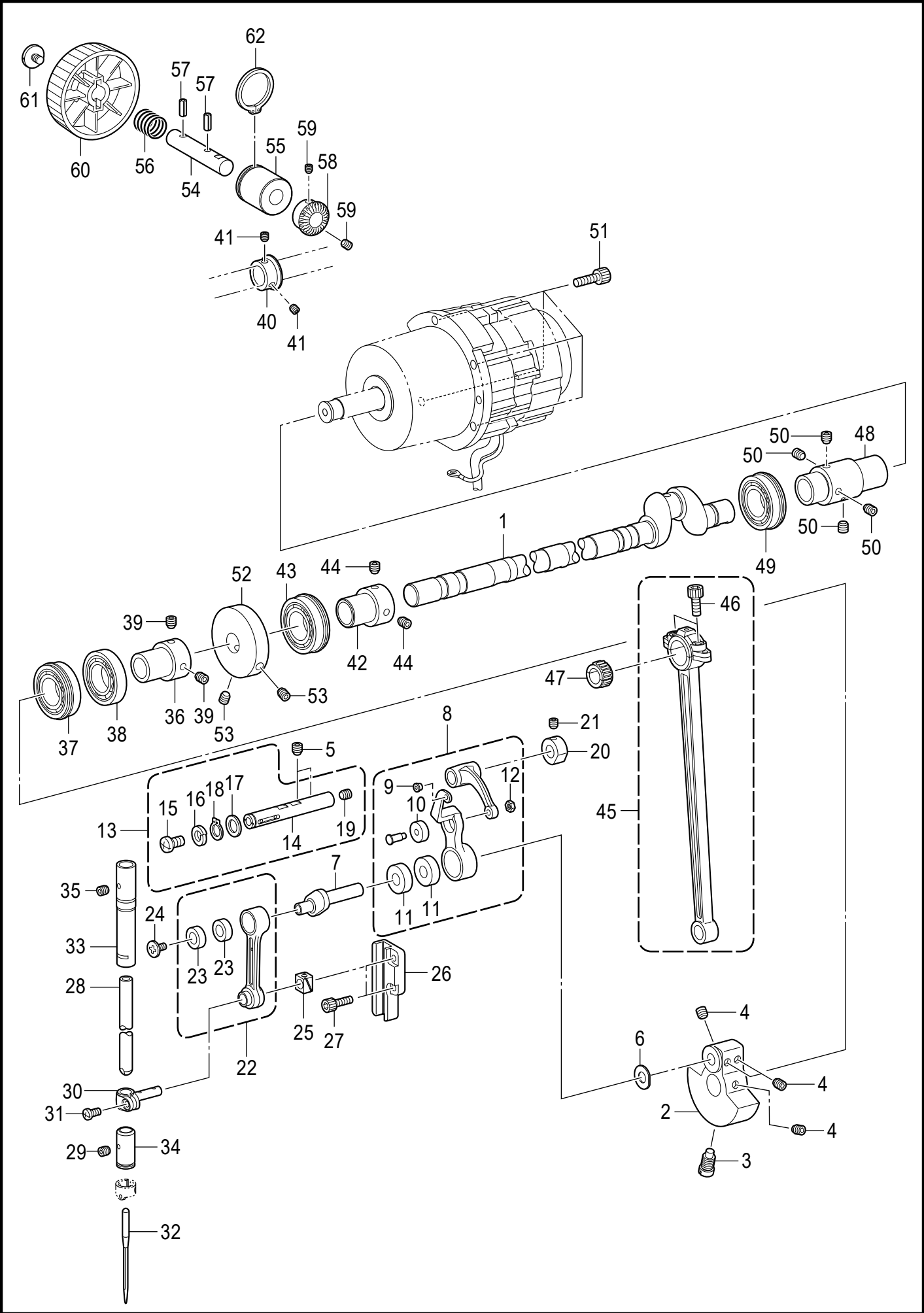


C1. 上軸・針棒関係 / UPPER SHAFT AND NEEDLE BAR MECHANISM

ÓÜË70PÐ7Í H

Ref. No.	Code	Q'ty	品名	Part Name
1	SB8070001	1	ベアリングブッシュクミ	BALL BEARING BUSH ASSY
2	SB8049001	1	ベアリングブッシュ	BALL BEARING BUSH
3	SB1484001	1	ベアリング6004	BALL BEARING 6004
4	S23651001	2	アナヒラ6X6ホソメ	SET SCREW SOCKET (FT) M6X6
5	SB8071101	1	ハンドプーリ	HAND PULLEY
6	S55481001	3	アナボルトザクミ4X12	BOLT SOCKET (S/P WASHER)M4X12
7	SB8044001	1	ウワジククミ	UPPER SHAFT ASSY
8	SB8045001	1	ウワジク	UPPER SHAFT
9	SB8047001	1	ツリアイクランクGクミ	THREAD TAKE-UP CRANK G ASSY
10	SB8046001	1	ツリアイクランクG	THREAD TAKE-UP CRANK G
11	SB1484001	1	ベアリング6004	BALL BEARING 6004
12	SB1485001	1	ベアリング6004	BALL BEARING 6004
13	S23651001	3	アナヒラ6X6ホソメ	SET SCREW SOCKET (FT) M6X6
14	S25235001	1	シメネジ8	SCREW M8
15	S23651001	1	アナヒラ6X6ホソメ	SET SCREW SOCKET (FT) M6X6
16	SB8048001	1	バランサー	BALANCER
17	S23651001	2	アナヒラ6X6ホソメ	SET SCREW SOCKET (FT) M6X6
18	SB8037001	1	プーリ001クミ	PULLEY 001 ASSY
19	S23651001	2	アナヒラ6X6ホソメ	SET SCREW SOCKET (FT) M6X6
20	SB8011001	1	ベルト505	BELT 505
21	110367001	1	ザガネ	WASHER, PLAIN SPECIAL 8
22	SB8111001	1	ハリボウクランク	NEEDLE BAR CRANK
23	SB8109001	1	テンビンクミ	THREAD TAKE-UP LEVER ASSY
24	SB3949001	1	ベアリング624	BALL BEARING 624T
25	SB3950001	2	ベアリング698	BALL BEARING 698
26	021300306	1	3シュナット3	NUT 3 M3
27	SB6735001	1	セットカラー	SET SCREW COLLAR
28	012500536	2	アナヒラ5X5	SET SCREW SOCKET (FT) M5X5
29	SB6729101	1	テンビンササエジクDクミ	THREAD TAKE-UP S-SHAFT D ASSY
30	SB6730001	1	テンビンササエジクD	THREAD TAKE-UP SUPPORT SHAFT D
31	062500616	1	ナベコ5X6	SCREW PAN M5X6
32	028050246	1	バネザガネ2-5	WASHER SPRING 2-5
33	SB6734001	1	スラストザガネ9	THRUST WASHER 9
34	048090142	1	トメワジクヨウC9	RETAINING RING EXTERNAL C9
35	012500536	1	アナヒラ5X5	SET SCREW SOCKET (FT) M5X5
36	012060636	2	アナヒラ6X6	SET SCREW SOCKET (FT) M6X6
37	SB1034101	1	ハリボウレンカンクミ	NEEDLE BAR CONNECTING ROD ASSY
38	SB0989001	2	ベアリング687	BALL BEARING 687
39	SA2422001	1	シメネジ3.57L	SCREW, SM3.57L
40	SB8112001	1	カクコマアンナイ	SLIDE BLOCK GUIDE
41	018401036	2	アナボルト4X10	BOLT SOCKET M4X10
42	SA3488001	1	カクコマ	SLIDE BLOCK
43	SB8114001	1	ハリボウD	NEEDLE BAR D
44	SB8113001	1	ハリボウダキDクミ	NEEDLE BAR CLAMP D ASSY
45	018401036	1	アナボルト4X10	BOLT SOCKET M4X10
46	SA3223001	1	ハリボウメタルU	NEEDLE BAR BUSH U
47	012060636	1	アナヒラ6X6	SET SCREW SOCKET (FT) M6X6
48	SA3224101	1	ハリボウメタルD	NEEDLE BAR BUSH D
49	012060636	1	アナヒラ6X6	SET SCREW SOCKET (FT) M6X6
50		1	ミシンハリDPX17	NEEDLE, DPX17
51	SB8206001	1	DCファントリツケイタ	DC FAN SETTING PLATE
52	SB8205101	1	DCファン	DC FAN
53	SB3847001	4	ヒラザガネチュウ3	WASHER_PLAIN_M_3
54	028030246	4	バネザガネ2-3	WASHER SPRING 2-3
55	018303036	4	アナボルト3X30	BOLT SOCKET M3X30

B. 上轴和针杆装置 / Upper shaft and needle bar mechanism



B. 上轴和针杆装置 / Upper shaft and needle bar mechanism

参照号	零部件序号	数量	零部件名称	NAME OF PARTS	RM
1	SC4708001	1	上轴	UPPER SHUFT	
2	SA4609101	1	曲柄 G	THREAD TAKE-UP CRANK G	
3	S25235001	1	螺钉 M8	SCREW M8	
4	S23651001	4	固定螺钉 M6X6	SET SCREW SOCKET (FT) M6X6	
5	012060636	2	螺钉 M6X6	SET SCREW SOCKET (FT) M6X6	
6	110367001	1	垫圈 8	WASHER PLAIN SPECIAL 8	
7	SB8111001	1	针杆曲柄	NEEDLE BAR CRANK	
8	SB6720001	1	挑线杆组件	THREAD TAKE-UP LEVER U ASSY	
9	S02532001	1	线导向	THREAD GUIDE	
10	SB3949001	1	轴承 624	BEARING 624	
11	SB3950001	2	轴承 698	BEARING 698	
12	021300306	1	六角螺母 M3	NUT 3 M3	
13	SB6729101	1	挑线杆支撑轴D组件	THREAD TAKE-UP S-SHAFT D ASSY	
14	SB6730001	1	挑线杆支撑轴 D	THREAD TAKE-UP SUPPORT SHAFT D	
15	062500616	1	螺钉 M5X6	SCREW PAN M5X6	
16	028050246	1	弹簧垫圈 2-5	WASHER SPRING 2-5	
17	SB6734001	1	轴向垫圈 9	THRUST WASHER 9	
18	048090142	1	轴用挡圈 C9	RETAINING RING EXTERNAL C9	
19	012500536	1	螺钉 M5X5	SET SCREW SOCKET (FT) M5X5	
20	SB6735001	1	紧圈	SET SCREW COLLAR	
21	012500536	2	螺钉 M5X5	SET SCREW SOCKET (FT) M5X5	
22	SB1034101	1	针杆连杆组件	NEEDLE BAR CONNECTING ROD ASSY	
23	SB0989001	2	轴承 687	BEARING 687	
24	SA2422001	1	螺钉 SM3.57-40X6L	SCREW, SM3.57L	
25	SA3488001	1	滑块	SLIDE BLOCK	
26	SB8112001	1	滑块导向 B	SLIDE BLOCK GUIDE	
27	018401036	2	螺栓 M4X16	BOLT SOCKET M4X16	
28	SB8114001	1	针杆	NEEDLE BAR	
29	144458001	1	螺钉 SM3.57-40X4.5	SET SCREW SM3.57-40X4.5	
30	SB8113001	1	针杆接头	NEEDLE BAR CLAMP	
31	062400816	1	螺钉 M4X8	SCREW PAN M4X8	
32		1	机针 DPX17	NEEDLE DPX17	
33	SA4666101	1	针杆轴套 UK	NEEDLE BAR BUSH UK	
34	SA3224101	1	针杆轴套 D	NEEDLE BAR BUSH D	
35	012060536	1	螺钉 M6X5	SET SCREW, SOCKET (FT) M6X5	
36	SA3206001	1	轴承套	BALL BEARING BUSH	
37	SA7520001	1	轴承 6904	BEARING 6904	
38	SA7521001	1	轴承 6904	BEARING 6904	
39	S23651001	2	固定螺钉 M6X6	SET SCREW SOCKET (FT) M6X6	
40	SB4500001	1	齿轮 R	PULLEY GEAR R	
41	012500536	2	螺钉 M5X5	SET SCREW SOCKET (FT) M5X5	
42	SA3206001	1	轴承套	BALL BEARING BUSH	
43	SB1484001	1	轴承 6004	BEARING 6004	
44	S23651001	2	固定螺钉 M6X6	SET SCREW SOCKET (FT) M6X6	
45	SC4913001	1	曲柄轴组件	CRANK ROD ASSY	
46	018501636	2	螺栓 M5X16	BOLT SOCKET M5X16	
47	SA4172001	1	滚针轴承: 蓝	NEEDLE BEARING	
47	SA4173001	1	滚针轴承: 黑	NEEDLE BEARING	
47	SA4174001	1	滚针轴承: 灰	NEEDLE BEARING	
47	SA4175001	1	滚针轴承: 黄	NEEDLE BEARING	
48	SA4608101	1	管接头 G	JOINT G	
49	SB1536001	1	轴承 6204	BEARING 6204	
50	S23651001	4	固定螺钉 M6X6	SET SCREW SOCKET (FT) M6X6	
51	018501636	4	螺栓 M5X16	BOLT SOCKET M5X16	
52	SC4808001	1	卷线驱动轮	DRIVING WHEEL B-WINDER	
53	S23651001	2	固定螺钉 M6X6	SET SCREW SOCKET (FT) M6X6	